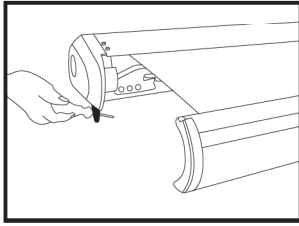
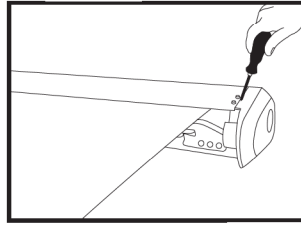


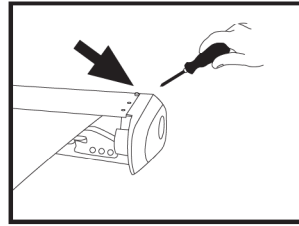
Replacing Awning Fabric Cover Instructions: (Full Cassette Manual, Electric Awnings)



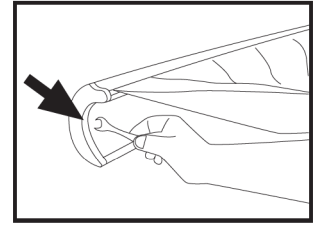
1. Manually wind the awning out using a screwdriver or winder. Needs to be fully projected.



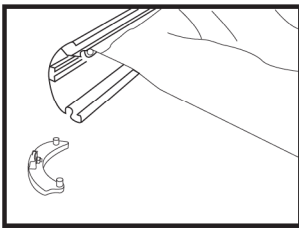
2. Unbolt two screws on the right hand side of full cassette.



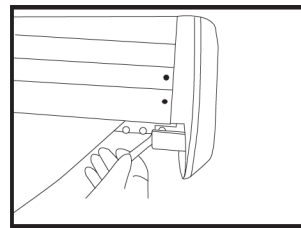
3. Remove one more bolt located near the top right hand corner of full cassette. Should be three bolts altogether.



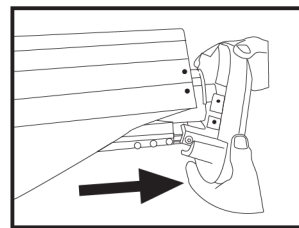
4. Now unscrew the bolt on the front bar lid located in the middle section.



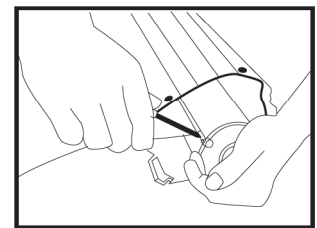
5. Take the lid off. Note: The lid is quite tight.



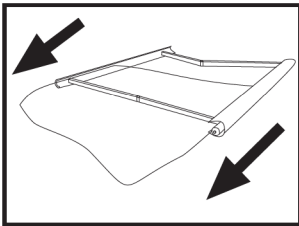
6. Unscrew the bolt which holds the right lid in place. Note: The screw doesn't come off, it only loosens.



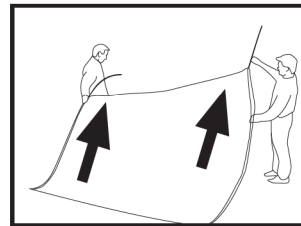
7. Slide the lid off the full cassette. Note: The bottom screw is quite tight, might need some force to pull the lid off.



8. Unscrew the bung/screw on the roller located by the end of the fabric/roller. This keeps the fabric in place.



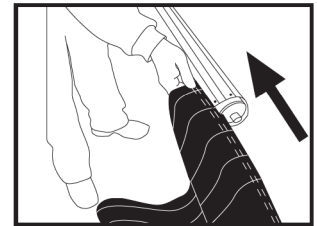
9. Need ideally two people to perform this task. Slide the fabric out.



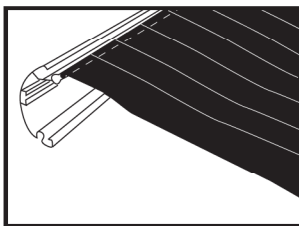
10. Remove the 2 x long cable cords located on the end of fabric. Store the fabric.



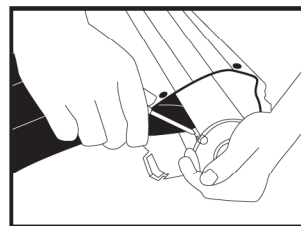
11. Use the 2 x long cable cords and feed it through the ends of the new fabric. Both ends of the fabric.



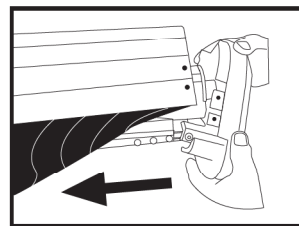
12. Slide the fabric back in the roller along with fig.13. Find the groove.



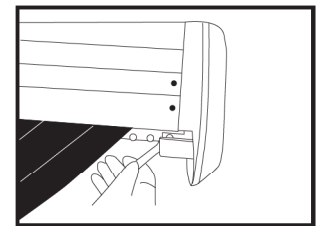
13. Slide the fabric back in the front bar same time as fig.12



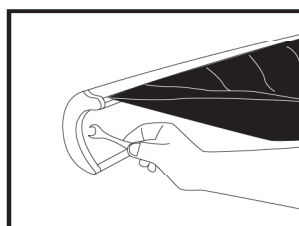
14. Once new fabric's installed tighten up the bung screw. This keeps the fabric in place.



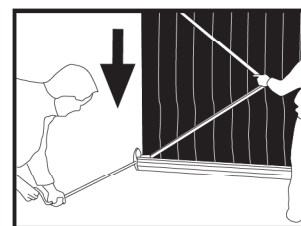
15. Place the end lid back on. Note: Make sure the lid is lined up and the roller connects into the lid. Ideal to slide the bottom bolt in first.



16. Tighten up the bolts (4).



17. Place the lid back on and tighten up the screw.



18. Turn the awning facing vertically. Use the winder to retract the awning back in. You have successfully changed the fabric cover.